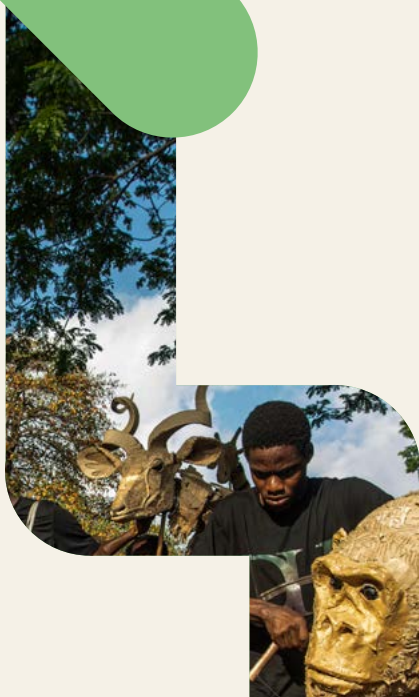


Arts

& nature

Composing
with the living



AVEC LE SOUTIEN DE



A GROWING NEED TO PROTECT THE LIVING WORLD

According to the IPBES, 75% of the Earth's land surface has now been significantly degraded by human activity.

Yet biodiversity is an essential foundation of human well-being, both now and in the future. This rapid decline undermines the balances on which our societies depend, exacerbates existing inequalities and gives rise to new and growing risks to global stability, peace and security.

Despite decades of scientific research and conservation policies, the transformation and degradation of ecosystems continues to intensify.

**"Man is part of nature,
and his war against nature is
inevitably a war against himself."**

RACHEL CARSON, MARINE BIOLOGIST





THE ARTS: A POWERFUL YET UNDER-UTILISED TOOL

At a time when environmental challenges have never been more pressing, there is a need to explore complementary avenues for action. Art has demonstrated its power to inspire action. Artistic creation offers a different way of raising awareness and mobilising people, whether they are local communities, development actors or decision-makers. It is a valuable tool for working with symbols and the imagination, re-enchanting our connection to ecosystems, whilst giving a voice to local areas and those who live there. Artistic practice also serves as a key lever for connecting individuals and communities to environmental issues.

Artists, development practitioners, economic actors, local communities... we invite them all to come together to co-create works that address the challenges facing our planet and strengthen public environmental policies.



OUR PROGRAM

ECHOING ARTS & NATURE – COMPOSING WITH THE LIVING

The Metis Fund is launching this program and is committing to three phases of action over a two-year period:

PHASE 1

Taking action in communities to make a local impact

Through 15 socio-artistic initiatives carried out around the world.

PHASE 2

Amplify and multiply the impact

Through capacity building for stakeholders (3 workshops and 6 peer exchanges).

PHASE 3

Scaling up to make a broader impact

Through the organization of events and the creation of artistic productions designed to inspire a wider audience



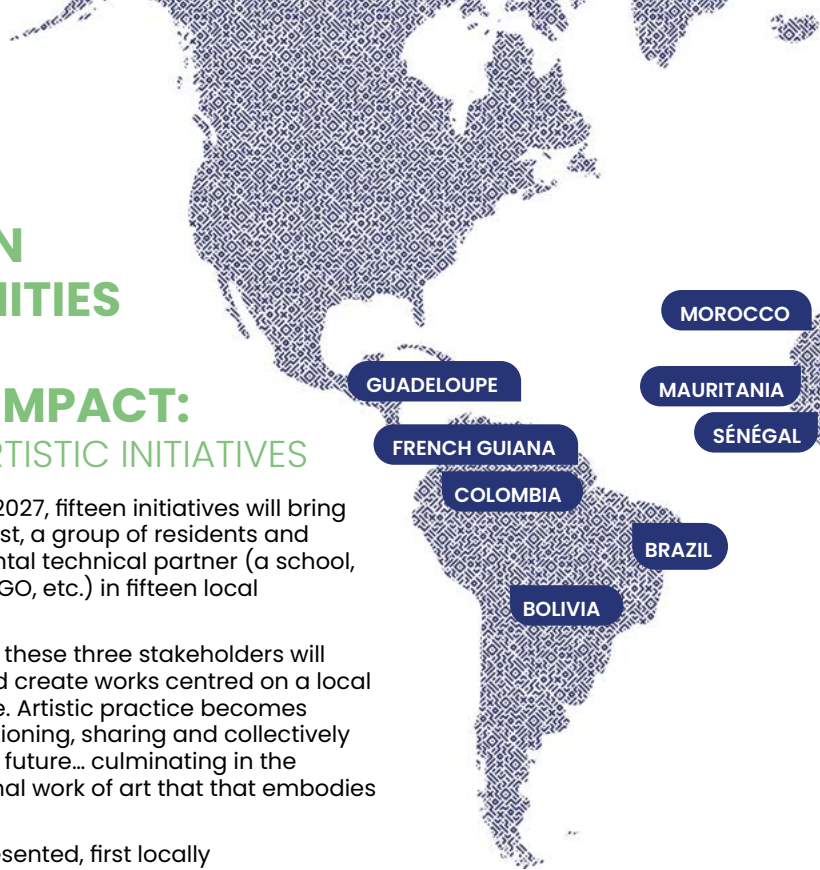
ACTING IN COMMUNITIES TO MAKE A LOCAL IMPACT:

15 SOCIO-ARTISTIC INITIATIVES

Between 2026 and 2027, fifteen initiatives will bring together a local artist, a group of residents and a socio-environmental technical partner (a school, a cooperative, an NGO, etc.) in fifteen local communities.

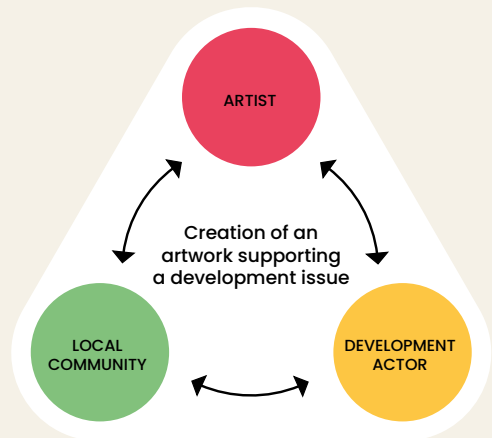
Over several weeks, these three stakeholders will exchange ideas and create works centred on a local environmental issue. Artistic practice becomes a medium for questioning, sharing and collectively imagining a shared future... culminating in the creation of an original work of art that that embodies their perspective.

The work is then presented, first locally and then more widely.



Engineering that makes an impact

Every initiative is developed locally. Local stakeholders identify the issue to be addressed, the artist and the artistic discipline involved.





Strategic territories selected collectively

The selection of countries and territories for intervention is based on the following criteria:

- expert advice,
- geographical diversity,
- the views of financial partners and local operators.



STRENGTHENING ECOSYSTEMS BY AMPLIFYING AND MULTIPLYING IMPACTS

80 LOCAL STAKEHOLDERS SUPPORTED

A single initiative is not enough if it remains isolated.
That is why we also work to nurture a broader ecosystem of actors.

3 capacity-building workshops

These training sessions, aimed at the local cultural ecosystem and environmental stakeholders, will be organised in three countries covered by the program. It enables stakeholders to design their own initiatives, using art as a tool for development.

6 South-South artist residencies

These exchanges between artists of the program contribute to their professional development. Collaborative fosters inspiration and opens new pathways for innovative solutions.

FOCUS ON What we're moving forward :

Resilience **Social cohesion**
Environmental awareness
Equity Climate justice **Freedom
of expression** Eco-Citizenship
Democracy **Local Empowerment**
Place-based solutions
Community Engagement
Lasting Legacy **Diverse cultural
narratives** Cultural rights
and access

MAURITANIA**WHERE WORDS NEST**

Between sky, sea and sandbanks, young voices take flight, carrying stories inspired by the biodiversity they call home.

**BACKGROUND**

40,000

hectares of vegetation cover are lost every year in Mauritania

INITIATIVE

In collaboration with the **Traversées Mauritanides literary festival**, the project will bring together young people from local schools, Mauritanian writers and staff from the Banc d'Arguin National Park. Through these exchanges, participants will weave their personal stories together with scientific knowledge, eventually collaborating to write texts inspired by the surrounding biodiversity. Their work will be read and shared within the park and beyond, giving a voice to those who live in, tell the stories of, and protect the Banc d'Arguin.

PARTNERS

The **Banc d'Arguin National Park (PNBA)** is a public body responsible for managing this Mauritanian nature reserve. Its 12,000 km² of land play a vital role in preserving marine and terrestrial biodiversity. Every year, more than 2 million birds find refuge in its vast mudflats.

INSPIRING WIDER AUDIENCES

BY DISSEMINATING ARTISTIC PRODUCTIONS AT SCALE

Whilst local initiatives transform communities, it is when they are brought into dialogue with one another and given greater visibility that they also influence decision-makers.

Production of a short film series

To ensure these stories travel beyond their places of origin, we will produce a collaborative series of short films documenting and connecting initiatives across the programme. Combining testimonies and tangible results, these films will build a compelling narrative linking local experiences to global debates. These short films will be directed by emerging local filmmakers.

The publication of a manifesto anthology

This Manifesto, under the direction of Clara Arnaud, outlining what artists and their works, around the world, express about Nature-related issues.

This publication will present the warnings they raise and the hopes they carry for the future.





Advocacy towards decision-makers

Through its ties with the French Development Agency (AFD), Metis draws on its network of stakeholders (technical and financial) working in development and culture to amplify the voices of its local partners. An opportunity both to inform the relevant decision-makers and to highlight the power of art as a lever for protecting the environment.

CLARA ARNAUD

PROGRAM PATRON

Trained as a geographer, Clara Arnaud has worked in international.

She is the author of two travel narratives recounting expeditions on foot and on horseback, as well as three novels. *Et vous passerez comme des vents fous*, her third novel, published by Actes Sud, has been widely successful and has won ten literary awards, including the Prize for Ecological Fiction.

Clara Arnaud draws on her itinerant experiences and her relationship with other living beings to nourish her writing. She regularly collaborates with scientists as well as other artists.

“Storytelling is, I believe, a way to change the world. I aspire to amplify the voices and actions of those who fight, who are inventing new relationships with the world.”

THE METIS FUND, AN EXPERIENCED PARTNER

◆ An innovative and well-structured public-private initiative.

Metis is an organization offering a robust management framework and strong operational consistency. Structured as an endowment fund, it benefits from legal and financial autonomy. This enables our private partners to claim tax reductions on their donations.

Metis is also hosted by the French Development Agency. This reinforces our management standards. It gives us access to an extensive network of trusted partners across the regions and to in-depth knowledge of the contexts in which we operate.

◆ A partnership-based approach rooted in local communities

Our hallmark lies in listening carefully to the needs and visions of our financial partners. We adopt a collaborative approach to design tailor-made projects, adapted to their ambitions and the realities of the local areas.

This partnership-based approach is put into practice on the ground. Attentive to the specificities of each context, Metis engages in daily dialogue with its local partners. They share their challenges with us and we present our framework for action. On this basis, we support them in defining and implementing the actions they wish to undertake following a logic of co-creation and sustainable impact.

◆ A proven methodology that drives transformation

Since its creation in 2021, Metis has been implementing a specific project management approach designed to maximize the impact of its investments for the benefit of its partners. This innovative methodology has demonstrated its transformative power at both the individual and collective levels. Our impacts are documented and analyzed. We carry out regular evaluations to report on our activities and draw lessons that are invaluable in guiding our future actions.

The first edition of the Diapason programme, dedicated to the oceans, enabled us to measure and assess the impact of our programmes. These insights allow us to build a stronger and more focused Diapason Art & Nature.

A PROGRAMME WITH A SIGNIFICANT IMPACT

Our work contributes directly to protecting the environment at a local level, whilst also shaping perceptions, practices and frameworks for action.

At a local level, transformative engineering for all stakeholders involved...



For technical operators:

- ◆ A better understanding of local issues, leading to better-designed and more effective initiatives.
- ◆ Recognition of their professions and an opportunity to build team cohesion.



For local residents:

- ◆ The development of skills, self-confidence, freedom of expression and a spirit of initiative
- ◆ Strengthening community ties and connections forged with local stakeholders



For artists:

- ◆ Funding for a unique and socially engaged artistic creation.
- ◆ Greater recognition (both national and international) of their contribution to environmental causes.



... which drives global dynamics

- ◆ Training and empowering local stakeholders opens up new practices and perspectives
- ◆ By promoting initiatives, advocating for action that incorporates the arts as a lever for nature conservation.
- ◆ Public and private initiatives for environmental protection that are more effective, sustainable and participatory.
- ◆ Through artistic exchange, the emergence of new narratives and imaginations that rekindle our connection with the living world.

Composing with the living

in figures

7,000 people

DIRECTLY INVOLVED

**15 co-created
works of art**

THAT SHAPE NEW IMAGINARIES

**80 local technical
and cultural actors**

EMPOWERED

20 artists

**ACTIVELY ENGAGED
IN THEIR LOCAL COMMUNITIES**





By supporting Metis, you can back one or more initiatives that are important to you and become part of a movement that turns creativity into concrete action, serving people, nature and culture. Help creativity become a true catalyst for change. Our team is here to work with you to identify the most suitable forms of support and the most meaningful partnerships.

◆ **Tiphaine de Mombynes**

Director of the Metis Fund
Email: demombynest@afd.fr

◆ **Barbara Winkelried Queab**

Partnerships Officer
Email: winkelriedqueab.ext@afd.fr

Your financial support is channelled through our endowment fund. Depending on your tax situation, you may be able to explore tax-efficient options, both in France and abroad.

